

(2024)

**MOTORCYCLE
OPERATING GUIDE
(250EFI)**

Foreword

Thanks for your purchase of this motorcycle, which is produced by advanced technologies. It will bring you a joyful and safe riding.

Riding is one of the most exciting experiences. In order to bring into play your cycle's best performance, you should be very familiar with the rules and demands suggested in the manual before riding.

The manual summarizes motorcycle's general maintenance and service. As long as following the under-mentioned rules, you could ensure a long-term, smooth and trouble-free operation of your motorcycle.

The specification and design are subject to change without further notice. The showed weight and size are approximation.

Contents

Foreword	1
Contents	2
Important Information	3
User's Notice.....	4
Parts Location	7
Operation	9
Fuel and Engine Oil.....	16
Pre-ride Inspection	18
Main Points of Riding	19
Inspection and Maintenance	24
Main Specification	34

Important Information

The initial 1500 kilometers is very important in the cycle's whole running life, and the correct running-in in this period could ensure the vehicle's longest life and best performance.

Careful and patient running-in will provide you with smooth riding and excellent performance. It is important to avoid operation that may lead to overheat to engine parts.

Please read the running-in section to master operation methods.

Please read through this manual and abide by each rule and illustration.

Pay special attention to the part assigned these words:

Warning: means you should be highly alert to a serious danger that may lead to personal injury or loss of life unless the rule is followed

Caution: means you should be alert to a middle-serious danger that may bring damage to parts or injury to the driver unless the instruction is followed.

Note: means you should be alert to light danger. The note makes the important illustration clearer and you can avoid the damage to parts if the rules are followed.

User's Notice

Accessory assembly and safety rules

You can select various kinds of accessories to assemble on your motorcycle, but improper assembly may bring about danger and damage, so we set up some rules to help you select the right accessory and assemble your cycle in a correct way.

1. When loading additional cargo or installing accessories that may add to the air resistance, keep the center of gravity of cargo low and close to the center of gravity of the motorcycle. You must check the rack and other parts are installed carefully and make sure that they are secure enough. Otherwise, offset of the center of gravity may induce danger.
2. Check and make sure the cycle's minimum ground clearance and inclination toward the side are appropriate. Improper installation of accessories is very likely to decrease these two items' safety factor. At the same time, make sure the installation doesn't prevent you from parking, turning, and other operation.
3. If you install accessories at the steering stem or the fore fork, the steering may be influenced, and the load may induce vibration of the fore parts. Therefore, the weight of accessories on the steering stem or the fore fork must be reduced to the minimum.

4. Greater air resistance caused by windshield, backrest, and travelling box may influence the cycle's stability. Improper installation or badly designed accessories would endanger riding, so you must be careful to select and install these accessories.

5. The installation of accessories mustn't restrict the rider's operation.

6. Additional electric devices may render primary coil overloaded, and serious overload may damage the electric devices, and more seriously, result in danger because of insufficient power of the motorcycle battery when riding.

Do as follows for safe ride:

For your safety, you must obey the following 9 rules while riding the motorcycle:

(1) wear helmet

Safe ride begins with putting on helmet. You must wear helmet while riding.

(2) Wear simple and convenient clothes

Pay attention to avoid wearing strange and loose clothes. Please wear tight and clothed clothes to ensure that your hands and feet move freely.

(3) Check before riding

Please read carefully the contents in Pre-ride inspection of the manual. Always check before starting the engine.

(4) Get familiar with the structure and performance of this motorcycle.

Your driving skills and knowledge of the structure of this motorcycle are the basis of safe riding. You should practice riding in an open area without vehicles to master riding skills.

(5) Get to know the speed limit of safe riding

The motorcycle's safety speed depends on the ground condition and your riding skills. Knowing the speed limit of your safe riding can avoid accidents.

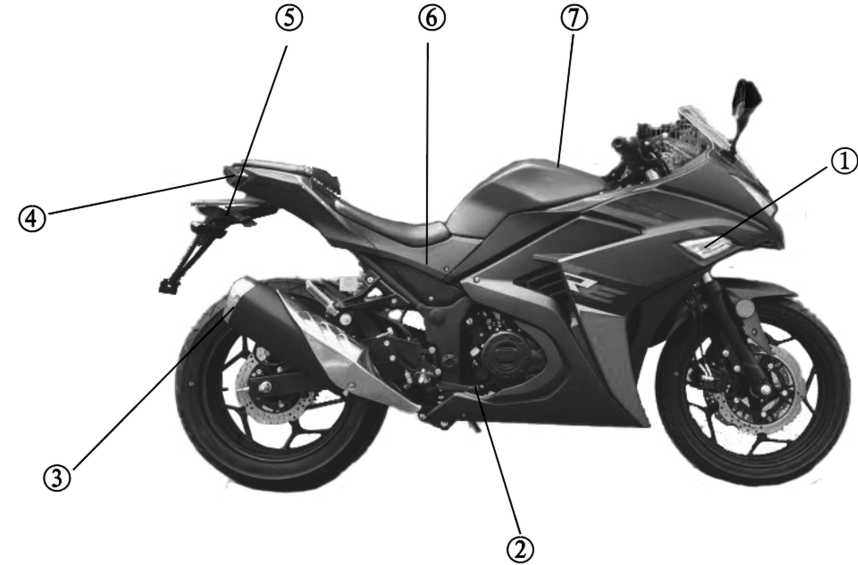
(6) Do not ride after drinking or taking medicine.

(7) Forbid the immature to ride motorcycle.

(8) Pay special attention to riding in rain

Riding on wet roads is very dangerous. Forbid turning during acceleration and keep safe distance with the front vehicles. Remember that the braking distance in rain is twice of that in sunny days, and please pay special attention to traffic signs. Once the condition of the road changes, reduce the speed.

(9) This type of motorcycle is suitable to ride on planar roads.



1. Front R. winker 2. Rear brake pedal 3. Exhaust muffler 4. Taillight 5. Rear R. winker
6. Cover, side body 7. Fuel tank cover



1. Headlight 2. Front L.winker 3. Gear Shift Pedal 4. Side Stand
5. Rear L.winker

FRAME BODY NUMBER:

ENGINE NUMBER:

Operation

1. Turn signal indicator: flashing when turn on left or right turn switch.

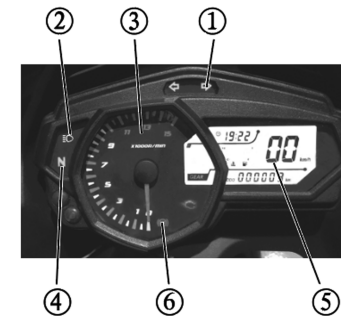
2. High beam: When the high beam is on, the blue light lights up.

3. Engine tachometer: Displays the current engine speed.

4. Neutral indicator: when the gear is in neutral position, the green light will be on.

5. Speedometer: It shows the distance traveled in kilometers.

6. ABS indicator: The light goes out while driving.



Ignition switch

"(OFF) ☒ ": All the circuits are closed and the key can be taken off.

"(ON) ○ ": All the circuits are open and the engine can start. but the key can't be taken off.

Left handlebar**Clutch lever (1)**

When starting the engine or shifting gear, handle the clutch lever to cut the drive for rear wheel.

Headlight beam switch (2)

When the beam switch is turned to " ≡▷ ", the high beam is turned on.

When the switch is turned to " ≡▷ ", the low beam is turned on.

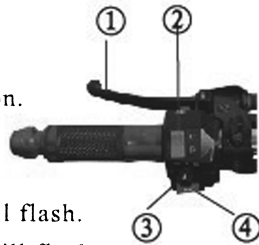
Turn Signal Indicator Switch(3)

When the turning switch is turned to " ← " the left turning light will flash.

When the turning switch is turned to " ⇒ " the right turning light will flash.

Horn button (4)

When the ignition switch is at "ON", press down this button and the horn will sound.

**Lever, FR. Brake (1)**

Used for front braking.

Light switch (2)

" ● " In this position, headlight, taillight, meter-light and position light are all turned off at the same time.

" P≡ " In this position, taillight, meter-light, position light are all turned on at the same time.

" ≡○≡ " In this position, headlight, taillight, meter-light, and position light are all turned on at the same time.



Throttle control handle (4)

This handle is used to control the engine speed. To accelerate, turn the handle towards yourself. To decelerate, turn the handle in the opposite direction.

Front brake lever (5)

Hold tight gradually the front brake lever to perform front brake.

Fuel tank cover

To remove the fuel tank cover, insert the key and turn clockwise. Then turn the fuel tank cover anti-clockwise to remove it. To put back the cover, please align the pin on the cover, then turn the cover clockwise. Turn the key anti-clockwise to pull it out.

Warning:

You cannot refill the fuel tank excessively. Do not splash the fuel onto the hot engine. Also you cannot refill the fuel tank directly above the opening, or the fuel will effuse if the fuel temperature rises. When refueling, you should turn off the engine, and turn the ignition key to OFF. No smoking when refueling.

Fuel cock

The fuel cock switch has three positions. " ⌋ " (open), " ⌋ " (reserve), " ⌋ " (close)
" ⌋ " (open) In most cases, the switch is in this position. Fuel flows into the carburetor through the cock.

" ⌋ " (reserve) If the fuel level is too low in the fuel tank, put the switch to this position and there will be 3.0 liters of reserve fuel.

" • " (close) After the engine has been turned off for several minutes, put the cock switch to this position.

Warning:

If the switch is on "OPEN" and "RESERVE" position, there may be fuel effusing out of the carburetor or fuel flowing into the engine. When the engine is being started, it may cause mechanical damages to the engine.

Caution: When the fuel cock is in "RESERVE" position, you should refuel immediately at a nearby gas station. After refueling is done, make sure to put the cock switch to "OPEN".

Steering Lock

To lock steering, turn the handlebar to left, then insert the ignition key the steering lock and turn clockwise. Do not forget to lock the steering when parking.

Warning:

After the steering is locked, do not push the motorcycle, or you will lose balance.

Rear carrier

The maximum load for the carrier is 3kg~5kg, and the items must be packed securely.

Kick Starter Rod

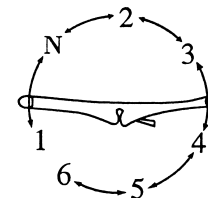
Kick starter rod is on the right side of the engine. When the clutch is disengaged, you can start the engine at any gear position.

Warning:

After the engine is started, check if the rod is returned to its normal position.

Gear Shift Pedal

This motorcycle has six gear positions.
You cannot shift more than one gear at a time.

**Caution:**

When the gear is on neutral position, the green light on the instrument panel will be lighted.
You should be careful to release the clutch lever gradually.

Please decelerate before gear-shift. Meanwhile, speed up the engine before engaging the clutch.
This method can avoid unnecessary wear of transmission parts and rear wheel.

Rear Brake Pedal

Step down the rear brake pedal and the rear brake will work. Meanwhile, the rear brake light will be lighted.

Fuel and Engine Oil

You'd better use lead-free or low lead content gasoline, with an octane number of no less than 90

Caution:

Use lead-free or low lead content gasoline can lengthen the service life of spark plug.

Engine oil

Please use SAE10W-30 or SAE 10W-40, which can give the engine the best performance, less carbon deposit, the least preheating, the longest service life of spark plug and best lubrication.

Maximum speed

The following table lists the maximum speed during running-in.

Break-in miles (km/h)	Speed control (km/h)				
	1 st gear	2 nd gear	3 rd gear	4 th gear	5 th
0-300	10	24	30	40	50
300-600	15	30	35	50	60
600-1000	15	30	40	50	60
1000-1500	15	35	40	60	75

Change engine speed

Don't keep the engine running at constant speed but change it frequently, which is helpful to parts running-in. In the running-in stage, it is necessary to impose proper stress on every engine part to ensure full running-in, but avoid overload.

Circulate engine off before riding

After starting the engine in a hot or cold state, and before exerting load, or before the engine runs, you must ensure that the engine has enough idling time to circulate the lubrication oil to every important engine part.

Perform the first but also the most important maintenance.

Maintenance in the initial 1000km is the most important of all. Perform all the adjustment well, tighten all the fasteners and replace the dirty oil. Timely 1000km maintenance will ensure that the engine has good performance and longer service life.

Pre-ride Inspection

Inspection Item	Inspection Objective
Steering	1) Smooth 2) No operation restriction 3) No clearance or loose
Brake	1) Free travel of pedal and lever 2) No "spongy" state 3) Brake reliably
Tire	1) Correct pressure 2) Suitable figure depth 3) no cutting
Fuel	There is enough gasoline to ride planned distance
Lights	Operate all lights: headlight, taillight, position light, stop light, instrument indicator lights and turn signal lights to check their functions
Indicator lights	High beam and turn signal indicator lights are normal
Horn button	Normal performance
Engine oil	Enough
Throttle	1) Correct free travel of throttle grip 2) The throttle grip has smooth operation and reliable reversion to the closed position
Instruments	All the functions are normal
Exhaust muffler	1) Exhaust normally 2) The noise is normal 3) No loose
Clutch	1) Adjust the clearance of clutch cable 2) Operation smooth

Tips for driving**Warning:**

You should practice driving in a safe and spacious area if you ride this type of motorcycle for the first time.

Riding with one hand is extremely dangerous; you should hold the two handle bars tightly with your both hands. In no circumstances can you release the handle bars.

Do not accelerate when turning. You must reduce the speed to safety range. If the ground is wet or slippery, you must reduce the speed.

At the exit of a tunnel or valley or when meeting large vehicles, you must be careful and reduce the speed.

Obey the transportation rules and limit your speed.

Engine start

1. Check the fuel, engine oil and battery before start. Make sure the fuel cock is open and the gear is on neutral position.
2. Let the motorcycle be supported by the main stand and rear wheel is off the ground.
3. Turn the ignition switch key to "ON".
4. To start the engine, you must let the gear be on neutral position and hold tight the clutch lever. Turn the choke lever to the most left, kick the starting rod or press down the electrical start.

button. After the engine is started, turn the choke lever to middle immediately and let the engine warm up enough. Then return the choke lever to its idle position. When the engine runs stably, the engine has been fully warmed up.

When the engine is hot

Turn the throttle 1/8 -1/4 turn, and kick down the starting rod or press down starting button quickly. When the engine is hot, there is no need to use the choke.

Caution:

After the engine is started, you should release the button immediately, lest it should cause damage to the engine.

To prevent low battery, after pressing down the button for 5 seconds, but the engine isn't started, you should stop for 10 seconds before starting again.

If you can not start the engine after 2-3 times, please turn the throttle 1/8-1/4 turn and start again.

Motorcycle not in use for long time or fuel with poor evaporation capacity can cause starting difficult. In this case you should start the engine repetitively but not turn the throttle.

Warning:

You cannot rtm the engine excessively when you are not riding, or it will overheat and would cause damage to engine parts.

Start Out

Hold tight the clutch lever and wait for a moment, then step down the gearshift pedal to 1" gear. Turn the throttle handle toward yourself and at the same time, gradually release the lever. After the clutch is engaged, the motorcycle will start out.

To change to another higher gear, accelerate slowly and then loosen the throttle handle. After shifting to another higher gear and releasing the clutch lever, turn the throttle handle again.

Warning:

Before running, the side stand should be returned to the upper.

Use Transmission

Transmission mechanism can assure the engine running smoothly. The transmission ratio is designed in accord with the engine performance. The driver should choose the best transmission ratio under general conditions.

Driving on slope

When driving on steep slope, the motorcycle would decelerate and may be of low drive. At this time the gear should be shifted to a lower one, then the engine can run in its normal power range. You should shift gear quickly lest that it should lose momentum.

-----When driving down slope, shift the engine to low gear to facilitate braking.

-----Pay attention not to run the engine excessively.

Use Brake and Parking

Turn the throttle handle towards yourself to close the throttle.

Use the fore and rear brake evenly at the same time.

Use gear shift to decelerate.

Before the motorcycle stops, hold tight the clutch lever and shift the gear to neutral. See the neutral light to check if it's neutral.

Caution:

Inexperienced driver uses only the rear brake. This will aggravate rear brake wear and lengthen braking distance.

Warning:

It is very dangerous to use only the fore or rear brake, may leading to skid or losing control. You should be very careful to use brake on wet roads and turns in roads. Sudden brake on slippery or bumpy roads is extremely dangerous.

-----The motorcycle should be parked on planar and firm ground.

-----If the motorcycle need to be parked by the side stand on a slope, it should be shifted to the 1st gear to prevent slippage. And before starting the engine, shift the gear to neutral.

-----Turn the ignition switch to "OFF" to turn off the engine.

-----Pull out the ignition key.

-----Turn the fuel cock switch to "CLOSE".

-----Lock the steering to ensure security.

Warning:

The higher the speed, the longer the braking distance is. Please ensure safety distance between your motorcycle and other motorcycles or objects.

Inspection and Maintenance

The periodic table of maintenance & Repair

Please inspect and maintain your motorcycle periodically to ensure safe ride, good performance, Long service time and reduced pollution.

I: inspection, cleaning if necessary, lubrication, replacement, and adjustment

A: Adjustment C: Cleaning R: Replacement L: Lubricate

Note:

- " * " Should be serviced by an authorized watco dealer, unless the owner has special tools and service material and is mechanically qualified.
- Clean more frequently when riding in dusty and moisture areas or in bad condition road.

Item	Frequency	Odometer reading (km)				
		300	1000	4000	8000	12000
Fuel lines				I	I	I
Fuel cleaner				C	C	C
Throttle operatin				I	I	I
Air cleaner			I	C	C	C
* Spark plug				I	R	R
* Choke space				I	I	I
Engine oil lever			I	I	I	I
* Engine oil	Clean every 1000-2000km, Replace if necessary.					
* Engine oil filter screen		C		C	C	C
* Carburetor idle speed			I	I	I	I
Chain	Clean and lubracate every 1 000km.					
Battery		I	I	I	I	I
Brake shoe wear				I	I	I
Brake system			I	I	I	I
* Brake light switch			I	I	I	I
Headlight aim			I	I	I	I
Suspension			I	I	I	I
Nuts, bolts, fasteners			I	I	I	I
* Wheels/Sookes			I	I	I	I
* Steering head bearing			I		I	

Battery

Open the right cover of the frame and you can check the electrolyte level. The level should be kept between the upper and lower mark. If the level is below the lower mark, you can only add distilled water to the upper mark and mustn't use tap water.

Caution:

Once the battery has been put into use, you can not add thin vitriol.

Do not distort, block or change the vent hose. Make sure the vent hose is attached to the battery and the other end is open.

Make sure the red wire is connected to the positive pole (+) and black wire is connected to the negative pole (-). Reversed connection would damage the battery.

For the initial 1,000km and afterwards every 3,000km, check the electrolyte density for the battery condition.

Air cleaner

If the element of the air cleaner is covered by dust, the inhaling resistance will increase and the output power would decrease, thus increasing fuel consumption. So after every 2,000km offide, you need to check and clean the element.

Caution: If you ride in dusty areas, the element should be cleaned and replaced more frequently. When the element hasn't been mounted, you mustn't start the engine. To run the engine without element of air cleaner will quicken the engine wear. You should make sure frequently that the element is in good condition because it affects the service life of the engine greatly.

Carburetor

The carburetor has been adjusted to the best working condition, so you needn't change it. You should pay attention to two adjustment: throttle cable clearance and idle speed.

(1) Start the engine and warm it up.

(2) After the engine has been warmed up, turn the idle speed adjustment screw to make the engine run stably at 1400 rpm.

Brake

After the initial 1000km and every 3000km of ride, you should check the brake.

Front Brake

(1) Measure the clearance from beginning to stop of brake. This measurement is 10-20mm

(2) If adjustment is needed, turn the adjustment nut clockwise to enlarge the free travel.

Rear Brake

To adjust the free travel of the rear brake pedal, turn in or turn out the adjustment nut of the rear brake to let the free travel to be 20~30mm.

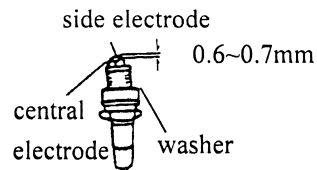
Spark plug

For the initial 1,000km and every 3,000km, use steel brush or spark plug cleaner to clean the carbon deposit on the spark plug. Measure the gap of the two electrodes and ensure it's kept at 0.6~0.7mm.

Replace the spark plug after every 6,000km

Check of spark plug

- (1) Take down the spark plug and connect it with the plug entrance.
- (2) Turn the ignition switch to "ON", and let the spark plug near the engine outside and start the engine. If the ignition system is normal, there will be blue sparks in the plug gap. If there is no spark, you need to ask the service station for repair.



Engine oil level

Before starting the engine, make sure to check engine oil level.

If the level is low and you should add the recommended engine oil.

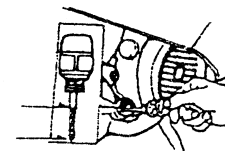
Cantion:

If you start engine when there is no engine oil, the engine may be damaged. So before you start the engine, check the engine oil, lest that the engine should be damaged.

Replace Engine Oil

After long distance of ride, the engine oil would deteriorate and reduce its lubrication effect. Therefore, after the initial 3,000km and every 1,000km, please replace the engine oil in the following way:

- (1) Remove the oil filling cover and the discharging bolt at the bottom of the engine, and let out all the old oil. In order to discharge completely, you should do this when the engine is hot when the oil viscosity is low.
- (2) Fit on the discharging bolt and make sure it's fastened.
- (3) Fill 1000ml SAE 10W-40 or SAE 10W-30 engine oil.
- (4) Fasten the filling cover.



Tire

You need to check the inflation pressure and tire figure. To ensure the highest safety and longer service life, you need to check the inflation pressure frequently

Tire Pressure

Inadequate tire pressure will not only quicken the tire wear but also affect the ride stability.

Low pressure will make turning difficult. But too high pressure may also lead to skid and even loss of control. The pressure must be kept within specified range. Pressure adjustment should be done when the tire is cold



Front Wheel	196kPa (2.00kg/cm ²)
Rear Wheel	221kPa (2.25kg/cm ²)

Warning:

Operation with excessively worn tire is hazardous and will adversely affect traction, stability, steering and handling. Prior to riding, tire inflation should be checked when the tires are "cold". Make sure that there are not cutting, nails or sharp pieces in the tires, that there is no dent or deforming of the rim. Improper tire inflation will cause abnormal tread wear and create a safety hazard. Under inflation may result in the tire damaged, or coming off from the rim. Replace the tires when the cenffal tread depth of the tires reaches the limit of 1.6mm.

Adjustment of Clutch

After the initial 1000km and every 3000km,

you need to adjust the clutch with the clutch cable adjuster.

Measure the clearance of the clutch lever, which should be 2~3mm.

If this figure isn't correct, you call adjust it in the following ways:

- (1) Loosen the lock nut.
- (2) Turn in or turn out the adjustment, to let the clearance of the clutch lever end be 2~3mm.
- (3) Fasten the lock nut.

Chain Adjustment

After every 1000km of ride, please adjust the chain laxity to let it's 10~20mm.

According to your ride condition, you may need to adjust it frequently.

- (1) Support the motorcycle with main stand.
- (2) Remove the pin and loosen the rear axle nut.

(3) Loosen the lock nut.

(4) Turn the adjustment bolt clockwise or anti-clockwise to adjust the chain laxity. At the same time, you should make sure the fore chain wheel aligns with the rear chain wheel. After the adjustment is finished, tighten the lock nut on the rear axle and fix on a new pin.

Make a final check.

(4) After the adjustment is finished, tighten the lock nut on the rear axle and fix on a new pin. Make a final check.



10~20mm.

Caution:

After new chains have been mounted, the two chain wheels need to be checked for wear and replace them if necessary.

After the adjustment is finished, tighten the lock nut on the rear axle and fix on a new pin. Make a final check.

Throttle cable adjustment

(1) Loosen the lock nut.

(2) Turn the adjuster to adjust the clearance, so that the choke lever is in the range of 5~10.

(3) Fasten the lock nut again after the adjustment is done.

Failure Solution

If the engine can not be started, please make the following check for reasons.

(1) If the fuel in the fuel tank is enough.

(2) If the fuel flows through the fuel cock to the carburetor.

(3) Cut fuel to the carburetor and turn the cook switch to OPEN, and see whether there is fuel flowing out from the hose.

(4) If fuel can get into the carburetor without fail, you should check the ignition system.

Engine Stop

(1) Check the fuel reserve in the fuel tank.

(2) Check the ignition system for its performance.

(3) Check the idle speed of engine.

Specification

Engine model	Single cylinder,air cooling,four stroke	Net weight	134kg
Working volume	196.4ml 223ml	Maximum load	150kg
Starting model	Electrical/kick starter	Tire specification	Front:110/70-17 110/70-17 Rear:140/70-17 150/70-17
Clutch	Wet,multi-plate	Fuel tank capacity	13L
Lubrication mode	Pressure-splash lubrication	Fuel	No.90 and above lead-free gasoline
Lubrication mode	Six gear shift,non-rotary	Battery	12V 9AH
Maximum speed	100km/h 120km/h	Fuse	10A
Full length	2000mm	Spark plug	D8RTC
Full width	720mm	Spark plug gap	0.6~0.7mm
Full height	1120mm	Engine oil type	SAE20W-50W
Wheel base	1340mm	Economical fuel Consumption	< 2.6L / 100km < 2.8L / 100km
Min.Groun clearance	135mm		

EMISSION CONTROL SYSTEM WARRANTY

Below is the Emission Related Components warranty printed in the owner's manual, the copy of the owner's manual is available upon your request.

YOUR WARRANTY RIGHTS AND OBLIGATIONS

The California Air Resources Board, the U.S. Environmental Protection Agency, and **Benyate Motorsport LLC**. (hereinafter "**Benyate**") are pleased to explain the Emission Related Components warranty on your 2024 and later Model Year Highway Motorcycle. New highway motor vehicles must be designed, built and equipped to meet U.S. EPA Federal and California anti-smog standards. Benyate must warrant the Emission Related Components on your vehicle for 18,000 km or for 5 years, whichever comes first, provided that there has been no abuse, neglect or improper maintenance of your vehicle.

Your emission control system may include parts such as the carburetor or fuel injection system, the ignition system, catalytic converter and engine computer, if it is equipped. Also included may be hoses, belts, connectors and other emission-related assemblies.

Where a warrantable condition exists, Benyate will repair your vehicle at no cost to you, including diagnosis, parts and labor.

If an emission-related part on your vehicle is defective, the part will be repaired or replaced by Benyate. This is your emission control system DEFECTS WARRANTY.

OWNER'S WARRANTY RESPONSIBILITIES

As the vehicle owner, you are responsible for the performance of the required maintenance listed in your owner's manual. Benyate recommends that you retain all receipts covering maintenance on your vehicle, but Benyate cannot deny warranty solely for the lack of receipts or for your failure to ensure the performance of all scheduled maintenance.

You are responsible for presenting your vehicle to the Benyate' dealer as soon as a problem exists. The warranty repairs should be completed in a reasonable amount of time, not to exceed 30 days. As the vehicle owner, you should be aware that Benyate may deny your warranty coverage if your vehicle or a part has failed due to abuse, neglect, improper maintenance or unapproved modifications.

If you have any questions regarding your warranty rights and responsibilities, you should contact Benyate Motorsport LLC, 530-B HARKLE ROAD STE 100, Santa Fe, NM, 87505, TEL: (866) 803- 3887 or (for California registered highway vehicles only) the California Air Resources Board at 9528 Telstar Avenue, El Monte, CA 91731-8001

LIMITED WARRANTY ON EMISSION CONTROL SYSTEM

Benyate warrants that each new 2024 and later Benyate highway motorcycle:

- A. is designed, built and equipped so as to conform at the time of initial retail purchase with all applicable regulations of the United States Environmental Protection Agency, and the California Air Resources Board; and
- B. is free from defects in material and workmanship which cause such vehicle to fail to conform with applicable regulations

of the United States Environmental Protection Agency or the California Air Resources Board for the periods specified above.

I.Coverage

Warranty defects shall be remedied during customary business hours at any authorized Benyate' dealer located within the United States of America in compliance with the Clean Air Act and applicable regulations of the United States Environmental Protection Agency and the California Air Resources Board. Any part or parts replaced under this warranty shall become the property of Benyate.

Repair or replacement of any warranted part shall be performed at a warranty station, except in an emergency when a warranted part or a warranty station is not reasonably available to the owner. In an emergency, repairs may be performed at any available service establishment, or by the owner, using any replacement part. Benyate shall reimburse the owner for his or her expenses including diagnostic charges, not to exceed Benyate's suggested retail price for all warranted parts replaced and labor charges based on Benyate's recommended time allowance for the warranty repair and the geographically appropriate hourly labor rate. The owner may reasonably be required to keep receipts and failed parts in order to receive compensation, provided Benyate's written instructions advise the owner of this obligation. The lack of availability of parts or the incompleteness of repairs within a reasonable time period, not to exceed 30 days also constitutes an emergency.

In the state of California only, emission-related warranted parts are specifically defined by the state's Emission Warranty Parts List. These warranted parts are: carburetor and internal parts; intake manifold; fuel tank; fuel injection system; spark advance mechanism; crankcase breather; air cutoff valves; fuel tank cap for evaporative emission controlled vehicles; oil filler cap; pressure control valve; fuel/vapor separator; canister; igniters; breaker governors; ignition coils; ignition wires; ignition points; condensers, catalytic, and spark plugs if failure occurs prior to the first scheduled replacement; and hoses, clamps fittings and tubing used directly in these parts. Since emission related parts may vary from model to model, certain models may not contain all of these parts and certain models may contain functionally equivalent parts.

In the state of California only, any warranted part which is scheduled for replacement as required maintenance in the owner's manual is warranted for 18,000 km or for 5 years, whichever first occurs, prior to the first scheduled replacement point for that part. If the part fails before the first scheduled replacement point, the part will be repaired or replaced Benyate. Any such part repaired or replaced under warranty shall be warranted for the remainder of the period prior to the first scheduled replacement point for the part.

In the state of California only, any add-on or modified part exempted by the Air Resources Board from the prohibitions of Vehicle Code section 27156 may be used on a vehicle or engine. Such use, in and of itself, do not void this warranty, however the failures of warranted parts caused by the use of an add-on or modified part is not covered by this warranty.

In the state of California only, Benyate will warrant the damages to other vehicle components proximately caused by a failure under warranty of any warranted part.

II.Limitations

This Emission Control System Warranty shall not cover any of the following:

- A. Repair or replacement of warranted parts directly caused by
 - (1) accident,
 - (2) misuse,
 - (3) repairs improperly performed or replacements improperly installed,
 - (4) use of replacement parts or accessories not conforming to Benyate' specifications which adversely affect performance and/or
- B. Inspections, replacement of parts and other services and adjustments required for required maintenance.
- C. Any vehicle equipped with an odometer or hour meter on which the odometer mileage or hour meter reading has been changed so that actual mileage cannot be readily determined.

LIMITED LIABILITY

- A. The liability of Benyate under this emission control system warranty is limited solely to the remedying of defects in material or workmanship by an authorized Benyate' dealer at its place of business during customary business hours. This warranty does not cover inconvenience or loss of use of the vehicle or transportation of the vehicle to or from the Benyate' dealer. Benyate shall not be liable for any other expenses, loss or damage, whether direct, incidental, consequential or exemplary arising in connection with the sale or use of or inability to use the vehicle for any purpose. Some states do not allow the exclusion or limitation of any incidental or consequential damages, so the above limitations may not apply to you.
- B. No express emission control system warranty is given by us except as specifically set forth herein. Any emission control system warranty implied by law, including any warranty of merchantability or fitness for a particular purpose, is limited to the express emission control system warranty terms stated in this warranty. The foregoing statements of warranty are exclusive and in line of all other remedies. Some states do not allow limitations on how long an implied warranty lasts so the above limitations may not apply to you.
- C. No dealer is authorized to modify this Benyate Limited Emission Control System Warranty.

IV.LEGAL RIGHTS.

This warranty gives you specific legal rights, and you may also have other rights which vary from state to state.

V.THIS EMISSION CONTROL SYSTEM WARRANTY IS IN ADDITION TO THE STANDARD LIMITED WARRANTY FOR ALL VEHICLES.

ADDITIONAL INFORMATION.

The owner is responsible for the performance of all required maintenance. Such maintenance may be performed at a service establishment or by any individual. The warranty period begins on the date the motorcycle is delivered to an ultimate purchaser.